

8 important considerations when relocating your life science business



Surround your company with a knowledge-based environment



Join a successful life science cluster



Easy access

Provide your business with the best conditions for growth

by becoming part of one of the world's leading life science clusters

Did you know that Denmark is a leader in the field of life science, and that the Medicon Valley business cluster in Greater Copenhagen is the international epicentre of Scandinavian life sciences?

Here we have a vibrant ecosystem and a deep talent pool underpinned by world-class life science universities and research infrastructure.

Success creates more success – the story of our region

Our region is successful because the life science businesses here are successful. The life science industry in Greater Copenhagen grows stronger every day, because it both benefits from, and contributes to a unique ecosystem comprising businesses, universities and the public sector. The success of others gives you the best possible conditions for creating your own growth and thoroughly succeeding as a life science region.

And your business is most welcome. You too can be a part of our success – and growth.

This white paper

This white paper will provide you with information about the life science industry in the Municipality of Ballerup – a part of Greater Copenhagen. You will find **8 important factors** when considering whether to relocate to Ballerup, and why our life science cluster is the ideal location for you.





Surround your company with knowledge-based businesses

- 1 Close to universities and hospitals – part of a top-class life science ecosystem
- 2 Get access to state-of-the art academic research centres
- 3 Business clusters in Ballerup



1

Part of a top-class life science ecosystem

Ballerup is located in the Greater Copenhagen Business Region, which encompasses an ecosystem of 300 life science companies, 3 universities and 11 research hospitals.

300
life science companies

3
universities

11
research hospitals

The ecosystem grants the companies access to world-class research in areas such as medical biochemistry, dermatology, gynaecology, reproductive medicine, proteins and genetics. The companies also have access to highly-qualified professionals and cooperation with state hospitals in the development, clinical testing and sale of innovative health solutions.

Ballerup is home to DTU Diplom's engineering training programme, and more than 2.500 students with STEM-skillsets. The Ballerup DTU Diplom Campus offers partnerships between business and students within a wide range of fields with relevans for the life science industry.



2

Get access to state-of-the art academic research centres

Greater Copenhagen gives life sciences businesses access to a number of academic research centres:

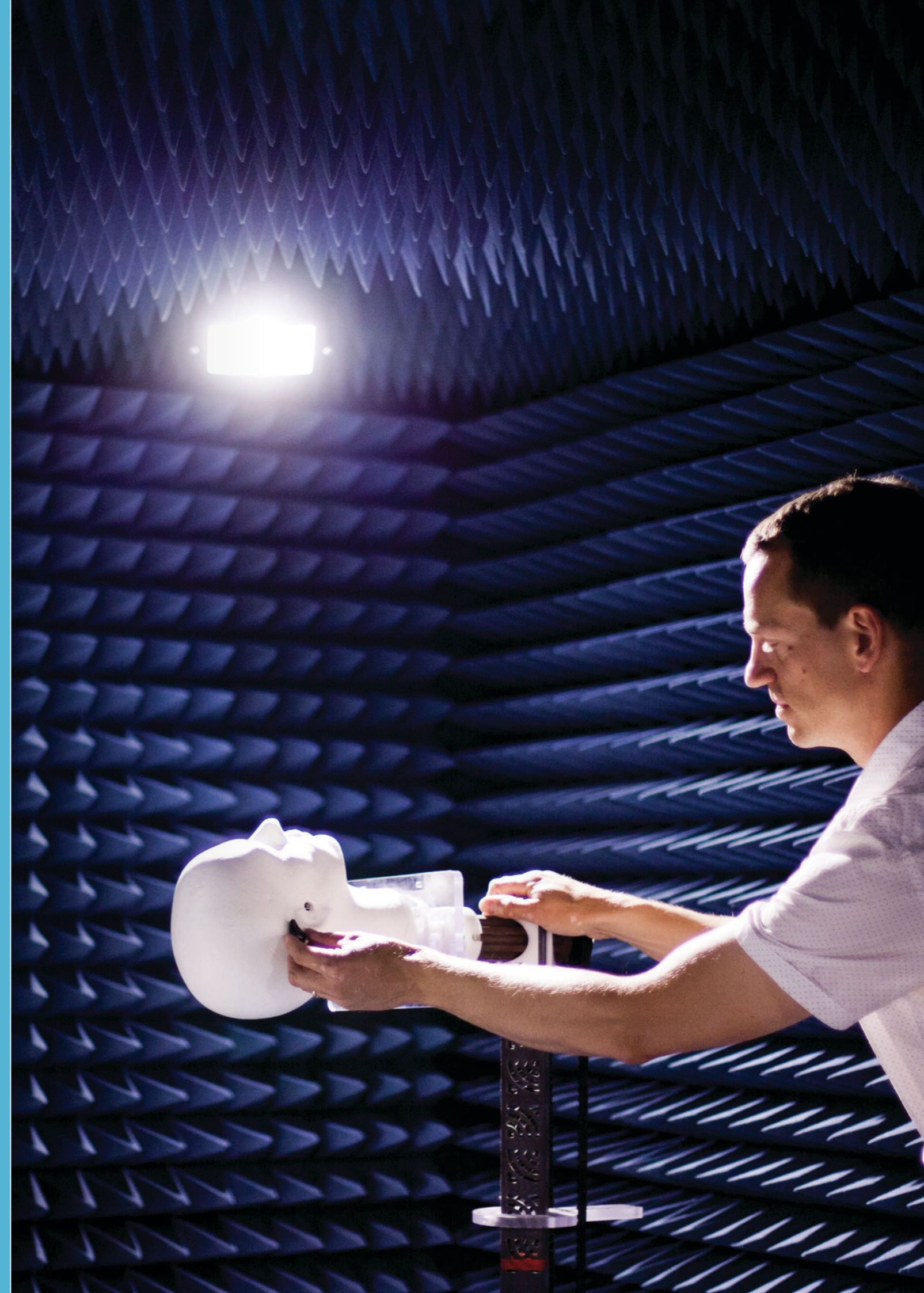
- Novo Nordisk Foundation Center for Protein Research: Promotes basic and applied discovery research on human proteins of medical relevance. Based at the University of Copenhagen
- Danish Stem Cell Center (DanStem). Basic research for the development of new therapies for diabetes and cancer. Based at the University of Copenhagen
- NNF Foundation Center for Biosustainability. Develops technologies to facilitate the transformation from an oil-based chemical industry to a sustainable bio-based society, in which chemicals are produced biologically. Based at the Technical University of Denmark
- NFF Center for Metabolic Research. Research on human metabolism for the development of strategies to tackle, prevent and cure diabetes and obesity. Based at the University of Copenhagen

Students enrolled in Life Science course

50,000

Life Science PhDs graduating every year

2,000



3

Business clusters in Ballerup

There are many good reasons to consider Ballerup when seeking a site for your business in the Copenhagen Metropolitan Area. Ballerup is home to three prominent clusters, which means that you will have access to a wide range of companies seeking highly-qualified expertise and which employ a large, innovative workforce who are constantly looking to the future.

The companies based in Ballerup Municipality contribute the most to Denmark's GDP compared with other Danish municipalities. What is more, employees in businesses in Ballerup receive the highest hourly wages in Denmark by virtue of being highly-skilled and exceptionally well-qualified, and by contributing to the success and growth of their companies.

Ballerup is home to three major business clusters



IT/Tech



Fintech



Life Science

Global companies

- Siemens
- Schneider
- Fujitsu
- Novo Nordisk
- LEO Pharma
- Pfizer
- Ambu
- Symphogen

Major Danish companies

- KMD
- TopDanmark
- Tryg
- Struers
- SDC
- Nets
- Atea
- Columbus IT



GDP

Ballerup contributes **3.5 times more** to Denmark's national product

Businesses within the municipality contribute 3.5 times more to Denmark's GDP per capita, which is the highest anywhere in Denmark. Billund contributes 2.8 and Glostrup 2.3 times more.



Join a successful life science cluster

- 4 Medicon Valley is expanding – become part of its success story
- 5 The successful life science cluster

4

Medicon Valley is expanding: become part of a success story

Denmark is renowned for having a strong and attractive Medicon Valley, which is home to a large number of talented companies within the field of life science.

An area beside the S-train station in Ballerup has been earmarked for the expansion of Medicon Valley. We are looking for companies within the field of life science and tech to become part of the new business community here. We are also witnessing companies in the niche between two industries become a part of the community. Examples of this are BioTech, HealthTech and MedTech.

Our vision is for the companies of the future based on working with future e.g. technologies or other relevant issues for the future. We are working to establish shared office facilities with the possibility of setting up relevant laboratory facilities and facilities which support innovation within the Tech area.

The success of the business clusters in Ballerup - and in Medicon Valley - is the sum of the success of all the companies. These companies excel due to their location within strong business clusters.



5

The successful life science cluster

Ballerup Municipality is part of the Medicon Valley business cluster and is the Danish municipality with the third highest number of workplaces.

Ballerup is a centre for internationally recognised life science companies working in the fields of diabetes, skin disorders, cancer, infertility, hearing devices and hospital equipment.

The life science cluster in Ballerup comprises more than 65 companies, all of which benefit from Denmark's commitment to health research, public-private partnerships and health data.

Examples of life science companies in Ballerup

- LEO Pharma
- GN Hearing
- Symphogen
- Novo Nordisk
- Origio
- Ambu

and small companies which support the life science industry, such as Soltech, Sophion Bioscience A/S and HP Elektronik-Montage.

Medicon Valley in Greater Copenhagen has:



4 life science universities

with 50,000 students, producing 2,000 Ph.D.s every year



22 hospitals

11 of which are university hospitals



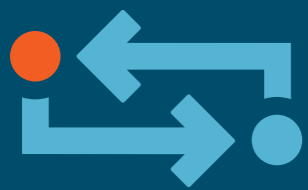
+150 biotech companies

+200 medtech companies

Medicon Valley ranks number one in Europe for drug pipeline, clinical trials and investment in R&D per capita in biotech and pharma

(Source: Copenhagen Capacity)





Easy access

- 6 Excellent infrastructure
- 7 Best of both worlds
– midway between the city and the countryside
- 8 A municipality that lends a hand



6

Excellent infrastructure

Businesses in Ballerup enjoy easy access to qualified workers. Ballerup has six business parks alongside the three large clusters which attract specialised workers from Denmark and abroad.

The infrastructure here is first class, and every day 35,000 workers commute to work in one of the business parks by S-train, bus, car or bicycle.

The centre of Copenhagen is approx. 30 minutes from Ballerup by car or by train. Naturally, it takes a bit longer by bike. In all, three Cycle Super Highways run through the municipality.

There are five S-train stations in Ballerup, all of which are situated close to the municipality's three town centres and six business parks neighbourhoods. In addition, over 20 bus routes provide links to the S-train lines and beyond, including a number of express bus routes.

There is also a well-developed infrastructure for cars with access to several motorways, which take you close to the city centre of Copenhagen and Copenhagen Airport. The airport is never more than 35 minutes away regardless of which part of Ballerup you are travelling from.



5 S-train stations



+20 Bus lines



3 Cycle Super Highways



Close to several highways and the airport



7 Best of both worlds – the city and the countryside

If you work – and perhaps also lives in Ballerup Municipality, Copenhagen is just a stone's throw away, where you can experience everything a modern, pulsing metropolis has to offer. You can bike into the city and around the city, swim in the clean harbour baths and hang out in one of the many relaxed and trendy urban neighbourhoods to be found throughout Copenhagen.

All of this is within easy reach of Ballerup, while in Ballerup itself you can enjoy direct access to areas of natural beauty where you can go mountain biking in the forest, go running through open scenery, participate in a wide range of local sports clubs and local cultural experiences. On top of all that, your children will attend one of the municipality's excellent schools. All of this combines to make Ballerup an attractive destination.

A large number of housing projects are underway in Ballerup's three town centres: Ballerup, Måløv and Skovlunde. Among other things we are in the process of building extensive new private housing attractive to modern families. The cost of this housing will be competitive compared to housing in Copenhagen.

In other words – you get the best of both worlds in Ballerup. Quick access to an exciting Capital, while at the same time you can escape to a beautiful, wild countryside in less than 30 minutes, work in one of Denmark's most productive companies, and live in an area surrounded by magnificent scenery.



8 A municipality that lends a hand

When you take the decision to locate your business in Ballerup, we as a municipality are naturally ready to help you settle in here.

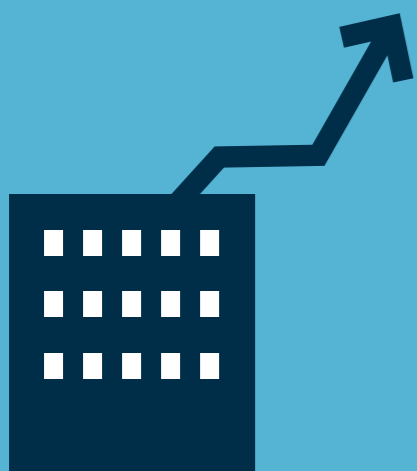
We are very happy to accompany you and look at the possibilities for localisation, and to discuss any construction needs you may have.

We will of course direct you towards local commercial property agents, and if you need to speak to other businesses in the area we will naturally make sure that you are put in touch with the right people.

We are working towards providing the business community with the best possible conditions and we are happy to provide guidance on environmental and construction matters.

We are creating the framework for development.





Success creates more success

The success of the life science cluster in Ballerup and Medicon Valley is the sum of the success of all the companies. The companies perform really well due to their location within strong business clusters. Being near competitors and partners is motivational. It makes you want to try a little harder every day.

The success of others gives you the best possible conditions for creating your own growth and the total success as a life science region.



Get in touch with us

We are your gateway to Medicon Valley. And we are here to help with any inquiry you may have. Please contact Jette Rau, Director of Business Development.



jrau@balk.dk

+45 4175 0220

You can also reach her on Skype, FaceTime, WeChat or other apps if relevant.

www.investinballerup.info

Links

Medicon Valley Alliance

<http://mva.org/>

Copenhagen Capacity

<http://www.copcap.com/>

Greater Copenhagen

<http://www.greatercph.com/>

Invest in Ballerup

<http://investinballerup.subsites.ballerup.dk/>

VisitDenmark

<https://www.visitdenmark.co.uk/en-gb/denmark-hygge>

Sources: Copenhagen Capacity, Medicon Valley Alliance and Det Danske Arbejdsmarked



How to get started